



AirNav Indonesia

Perum LPPNPI

UNIT PIA WILAYAH MAKASSAR

Jl. Bandara Baru Gedung MATSC

Telp : 0411-4813210 Ext : 2058/2065

Fax : 0411-4813222

aismks@yahoo.com

ais.makassar@airnavindonesia.co.id

www.airnavindonesia.co.id

Makassar, 13 Januari 2025

Nomor : 003/B/34.02/LPPNPI/OPS.04/I/2025
Lampiran : 1 (satu) berkas
Perihal : Penyampaian Salinan Publikasi AIRAC AIP AMDT 156
Bandar Udara Betoambari - Baubau

Kepada Yth.
Kepala Kantor Unit Penyelenggara Bandar Udara
Betoambari - Baubau

di
Tempat

1. Mendasari publikasi AIRAC AIP AMDT 156 Bandar Udara Betoambari - Baubau (WAWB) dated 20 Feb 25.

2. Berkaitan dengan hal tersebut diatas, dengan hormat disampaikan salinan publikasi AIRAC AIP AMDT 156 Bandar Udara Betoambari - Baubau (WAWB) yang berlaku efektif tanggal **20 Februari 2025**. Perubahan terdapat pada halaman sebagai berikut :

WAWB AD 2-1

WAWB AD 2-2

WAWB AD 2-4

WAWB AD 2-5

WAWB AD 2-6

WAWB AD 2-7

WAWB AD 2.24-1 / ADC

WAWB AD 2.24-11B1 / IAC

WAWB AD 2.24-11B2 / IAC

Detail informasi dapat pula diakses melalui website <https://aimindonesia.dephub.go.id> dan <https://iwish.dephub.go.id>.



AirNav Indonesia

Perum LPPNPI

UNIT PIA WILAYAH MAKASSAR

Jl. Bandara Baru Gedung MATSC

Telp : 0411-4813210 Ext : 2058/2065

Fax : 0411-4813222

aismks@yahoo.com

ais.makassar@airnavindonesia.co.id

www.airnavindonesia.co.id

3. Sehubungan dengan poin 1 (satu) di atas, mohon untuk dapat dilakukan evaluasi publikasi terhadap kesesuaian data, jika terdapat ketidaksesuaian data maka tindakan koreksi dapat disampaikan kepada Unit PIA Wilayah Denpasar sesuai dengan alur pengajuan publikasi melalui email ais.makassar@airnavindonesia.co.id dan aismks@yahoo.com
4. Demikian disampaikan, atas perhatiannya diucapkan terima kasih.

Kepala Unit PIA Wilayah Makassar



RETTYNA WIRDIYANTI

Tembusan Yth. :

- Kepala Kantor Otoritas Bandar Udara Wilayah V Makassar
- General Manager Perum LPPNPI Cabang Kendari
- Kepala Unit Baubau Perum LPPNPI

WAWB AD 2.1 AERODROME LOCATION INDICATOR AND NAME

WAWB – BAUBAU / Betoambari ←

WAWB AD 2.2 AERODROME GEOGRAPHICAL AND ADMINISTRATIVE DATA

| | |
|--|--|
| ARP coordinates and site at AD..... | 052913S 1223410E |
| Direction and distance from (City)..... | 5 km from Baubau ← |
| Elevation/Reference temperature & Mean low temperature..... | 100 ft/32°C |
| Geoid undulation at AD ELEV PSN | NIL |
| MAG VAR/Annual change..... | 1°E (2020) / 0.08° Decreasing |
| AD Operator, address, telephone, telefax, e-mail, AFS & website..... | DGCA - Betoambari Jl. Dayanu Ikhsanudin Kel. Katobengke, Kec. Betoambari, Kota Baubau, Sulawesi Tenggara - 93724 Tel : (+62402) 2823675 Telefax : (+62402) 2823675 Email : bandara_betoambari@ymail.com AFS : NIL Website : NIL |
| Type of traffic permitted (IFR/VFR) | VFR |
| Remarks | NIL |

WAWB AD 2.3 OPERATIONAL HOURS

| | |
|---------------------------------|--|
| Aerodrome Operator | 2230 - 0930 |
| Customs and Immigration | NIL |
| Health and sanitation..... | 2230 - 0930 |
| AIS Briefing Office | NIL |
| ATS Reporting Office (ARO)..... | 2230 - 0930 |
| MET Briefing Office | H24 |
| ATS | 2230 - 0930 |
| Fuelling | NIL |
| Handling | 2230 - 0930 |
| Security..... | H24 |
| De-icing | Not Applicable |
| Remarks | - Local Time: UTC +8 HR - As AIS Regional Office Makassar |

WAWB AD 2.4 HANDLING SERVICES AND FACILITIES

| | |
|--|-----------------------------|
| Cargo - Handling facilities | Baggage Chart and Warehouse |
| Fuel/oil types | NIL |
| Fuelling facilities/Capacity..... | NIL |
| De-icing facilities | Not Applicable |
| Hangar space for visiting aircraft..... | NIL |
| Repair facilities for visiting aircraft..... | NIL |
| Remarks | NIL |

WAWB AD 2.5 PASSENGER FACILITIES

| | |
|---------------------------|---|
| Hotels | In the city |
| Restaurants | In the city |
| Transportation | Taxis |
| Medical Facilities | At aerodrome |
| Bank and Post Office..... | Bank in the city, ATM at aerodrome, Post Office in the vicinity of aerodrome |
| Tourist Office | In the city |
| Remarks | NIL |

WAWB AD 2.6 RESCUE AND FIRE FIGHTING SERVICES

| | |
|--|--|
| AD category for fire fighting..... | Category 5 |
| Rescue equipment | 1 Unit Foam Tender Type IV 2 Units Foam Tender Type V 1 Unit Rapid Intervention Vehicle 1 Unit Ambulance |
| Capability for removal of disabled aircraft..... | NIL |
| Remarks | Removal of disabled aircraft available at Sultan Hasanuddin International Airport Makassar, Tel : (+62411) 3656000 ext. 6917 |

WAWB AD 2.7 SEASONAL AVAILABILITY – CLEARING

| | |
|-----------------------------------|----------------|
| Types of clearing equipment | Not Applicable |
| Clearance priorities | Not Applicable |
| Remarks | Not Applicable |

WAWB AD 2.8 APRONS, TAXIWAYS AND CHECK LOCATIONS/POSITIONS DATA**APRON SURFACE AND STRENGTHH**

| | |
|-------------|---|
| Designation | = Apron Segment I (Aircraft Stand 3) |
| Surface | = Asphalt |
| Strength | = PCR 380/F/C/X/T ← |
| Designation | = Apron Segment II (Aircraft Stand 1 and 2) |
| Surface | = Asphalt |
| Strength | = PCR 300/F/C/X/T ← |

TAXIWAY WIDTH, SURFACE AND STRENGTHH

| | |
|-------------|---------------------|
| Designation | = TWY A |
| Width | = 23 m |
| Surface | = Asphalt |
| Strength | = PCR 230/F/C/X/T ← |
| Designation | = TWY B |
| Width | = 23 m |
| Surface | = Asphalt |
| Strength | = PCR 380/F/C/X/T ← |

| | |
|--|---|
| Altimeter checkpoint location and elevation .. | NIL |
| VOR checkpoints..... | NIL |
| INS checkpoints | See AD Chart |
| Remarks | Dimension of Aprons : Apron Segment I (Aircraft Stand 3) : 60 m x 60 m Apron Segment II (Aircraft Stand 1 and 2) : 110 m x 60 m |

WAWB AD 2.9 SURFACE MOVEMENT GUIDANCE AND CONTROL SYSTEM AND MARKINGS

Use of aircraft stand ID signs, TWY guide lines and visual docking/parking guidance system of aircraft stands..... Aircraft stand ID sign : 1, 2, 3 ←
 RWY and TWY markings and LGT TWY Guidelines : Available
 Marking
 RWY : Designation, Centre line, THR, Side Stripe, TDZ, Aiming Point, RWY End, Turn Pad
 TWY : Centre line, RWY Holding Position, Edge
 Light
 RWY : Edge, THR, RWY End, RTIL
 TWY : Edge
 Stop bars and Runway guard lights NIL
 Other runway protection measures..... NIL
 Remarks..... NIL

WAWB AD 2.10 AERODROME OBSTACLES

| In Area 2 | | | | | |
|----------------------|-----------|---------------|----------|-----------------------|---------|
| OBST ID/ Designation | OBST type | OBST position | ELEV/HGT | Markings/Type, colour | Remarks |
| 1 | 2 | 3 | 4 | 5 | 6 |
| NIL | NIL | NIL | NIL | NIL | NIL |

| In Area 3 | | | | | |
|----------------------|-----------|---------------|----------|-----------------------|---------|
| OBST ID/ Designation | OBST type | OBST position | ELEV/HGT | Markings/Type, colour | Remarks |
| 1 | 2 | 3 | 4 | 5 | 6 |
| NIL | NIL | NIL | NIL | NIL | NIL |

WAWB AD 2.11 METEOROLOGICAL INFORMATION PROVIDED

| | |
|---|---|
| Associated MET Office..... | MET Station Betoambari |
| Hours of service | H24 |
| MET Office outside hours | NIL |
| Office responsible for TAF preparation | MET Station Sultan Hasanuddin |
| Periods of validity | 12 Hours, 6 Hours |
| Trend forecast | TREND |
| Interval of issuance | 1 Hour |
| Briefing/consultation provided | Personal Consultation And Telephone |
| Flight documentation..... | NIL |
| Language(s) used | English |
| Charts and other information available for briefing or consultation | NIL |
| Supplementary equipment available for providing information..... | AWOS and Receiver for satellite images. |
| ATS units provided with information | Baubau AFIS |
| Additional information (limitation of service, etc.)..... | Telp : +628114037700 |

WAWB AD 2.12 RUNWAY PHYSICAL CHARACTERISTICS

| Designations RWY NR | | True BRG | Dimensions of RWY (M) | Strength and surface of RWY and SWY | THR coordinates RWY end coordinates THR geoid undulation |
|------------------------|----|----------|--------------------------|---|--|
| 1 | | 2 | 3 | 4 | 5 |
| 1 | 04 | 040.78° | 2 010 x 30 | PCR 380/F/C/X/T Asphalt | THR 052937.13S 1223347.85E GUND 184.2 ft |
| 2 | 22 | 220.78° | 2 010 x 30 | PCR 380/F/C/X/T Asphalt | THR 052847.52S 1223430.56E |

| THR elevation and highest elevation of TDZ of precision APP RWY | | Slope of RWY-SWY | SWY dimensions (M) | CWY dimensions (M) | Strip dimensions (M) |
|---|------------|-------------------------------------|--------------------------|--------------------------|----------------------------|
| 6 | | 7 | 8 | 9 | 10 |
| 1 | THR 98 ft | Longitudinal 1% Transversal 1.5% | NIL | NIL | 2 090 x 150 |
| 2 | THR 100 ft | Longitudinal 1% Transversal 1.5% | NIL | NIL | 2 090 x 150 |

| RESA dimensions (M) | | Location and description of arresting system | OFZ | Remarks |
|------------------------|-----|---|-----|-----------------------------------|
| 11 | | 12 | 13 | 14 |
| 1 | NIL | NIL | NIL | Turning Area 1 200 m ² |
| 2 | NIL | NIL | NIL | Turning Area 1 200 m ² |

WAWB AD 2.13 DECLARED DISTANCES

| RWY Designator | TORA (M) | TODA (M) | ASDA (M) | LDA (M) | Remarks |
|-------------------|-------------|-------------|-------------|------------|---------|
| 1 | 2 | 3 | 4 | 5 | 6 |
| 04 | 2 010 | 2 010 | 2 010 | 2 010 | NIL |
| 22 | 2 010 | 2 010 | 2 010 | 2 010 | NIL |

WAWB AD 2.14 APPROACH AND RUNWAY LIGHTING

| RWY Designator | | APCH LGT type, LEN, INTST | THR LGT colour, WBAR | VASIS (MEHT) PAPI | TDZ, LGT LEN |
|----------------|----|---------------------------|----------------------|--------------------|--------------|
| 1 | | 2 | 3 | 4 | 5 |
| 1 | 04 | NIL | Green | PAPI, Left / 3.00° | NIL |
| 2 | 22 | NIL | Green | PAPI, Left / 3.01° | NIL |

| RWY Centre Line LGT LEN, spacing, colour, INTST | | RWY Edge LGT LEN, spacing, colour, INTST | RWY End LGT colour, WBAR | SWY LGT LEN (M), Colour | Remarks |
|---|-----|--|--------------------------|-------------------------|---------|
| 6 | | 7 | 8 | 9 | 10 |
| 1 | NIL | White | Red | NIL | RTIL |
| 2 | NIL | White | Red | NIL | NIL |

WAWB AD 2.15 OTHER LIGHTING, SECONDARY POWER SUPPLY

| | |
|---|---|
| ABN/IBN location, characteristics and hours of operation..... | ABN : On top of Tower, Green, 30 RPM |
| LDI location and LGT | NIL |
| Anemometer location and LGT | NIL |
| TWY edge and centre line lighting | Edge : TWY A, B Centreline : NIL |
| Secondary power supply/switch-over time ... | Switch over time: 6 seconds |
| Remarks | - Floodlight Available - 1 unit Genset 150 kVA |

WAWB AD 2.16 HELICOPTER LANDING AREA

| | |
|--|-----|
| Coordinates TLOF or THR of FATO | NIL |
| Geoid undulation | NIL |
| TLOF and/or FATO elevation M / FT | NIL |
| TLOF and FATO area dimensions, surface, strength, marking..... | NIL |
| True BRG of FATO..... | NIL |
| Declared distance available | NIL |
| APP and FATO lighting | NIL |
| Remarks | NIL |

WAWB AD 2.17 ATS AIRSPACE

| | |
|--------------------------------------|---|
| Designation and lateral limits | BETOAMBARI AFIZ : a circle with radius 5 NM centred on ARP |
| Vertical limits | GND/Water up to 4 000 ft MSL |
| Airspace classification | G |
| ATS unit call sign..... | Betoambari Aerodrome Information |
| Language(s) | English |
| Transition Altitude..... | 11 000 ft/FL130 |
| Hours of applicability | 2230 - 0930 |
| Remarks | NIL |

WAWB AD 2.18 ATS COMMUNICATION FACILITIES

| Service designation | | Call sign | Channel | SATVOICE number (s) |
|---------------------|------|--|-----------|---------------------|
| 1 | | 2 | 3 | 4 |
| 1 | AFIS | Betoambari Aerodrome Information | 122.6 MHz | NIL |

| Logon address | | Hours of operation | Remarks |
|---------------|-----|--------------------|---------|
| 5 | | 6 | 7 |
| 1 | NIL | 2230 - 0930 | NIL |

WAWB AD 2.19 RADIO NAVIGATION AND LANDING AID

| Type of aids, Magnetic variation, and Type of supported operation for ILS/MLS, Basic GNSS, SBAS, and GBAS, and for VOR/ILS/MLS also station declination used for technical line- up of the aid | | ID | Frequency(ies), Channel number(s), Service provider and Reference Path Identifier (RPI) | Hours of operation |
|---|-----|-----|---|-----------------------|
| 1 | | 2 | 3 | 4 |
| 1 | NIL | NIL | NIL | NIL |

| Geographical coordinates of the Position of the transmitting antenna | | Elevation of the transmitting antenna of DME of DME/P, Elevation of GBAS reference point and The ellipsoid height of the point for SBAS, The ellipsoid height of the landing threshold point (LTP) or the fictitious threshold point (FTP) | Service volume radius from the GBAS reference point | Remarks |
|--|-----|---|--|---------|
| 5 | | 6 | 7 | 8 |
| 1 | NIL | NIL | NIL | NIL |

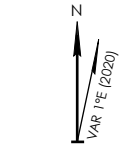
WAWB AD 2.20 LOCAL AERODROME REGULATIONS*Reserved***WAWB AD 2.21 NOISE ABATEMENT PROCEDURES***Reserved***WAWB AD 2.22 FLIGHT PROCEDURES***Reserved*

WAWB AD 2.23 ADDITIONAL INFORMATION*Reserved***WAWB AD 2.24 CHARTS RELATED TO AN AERODROME**

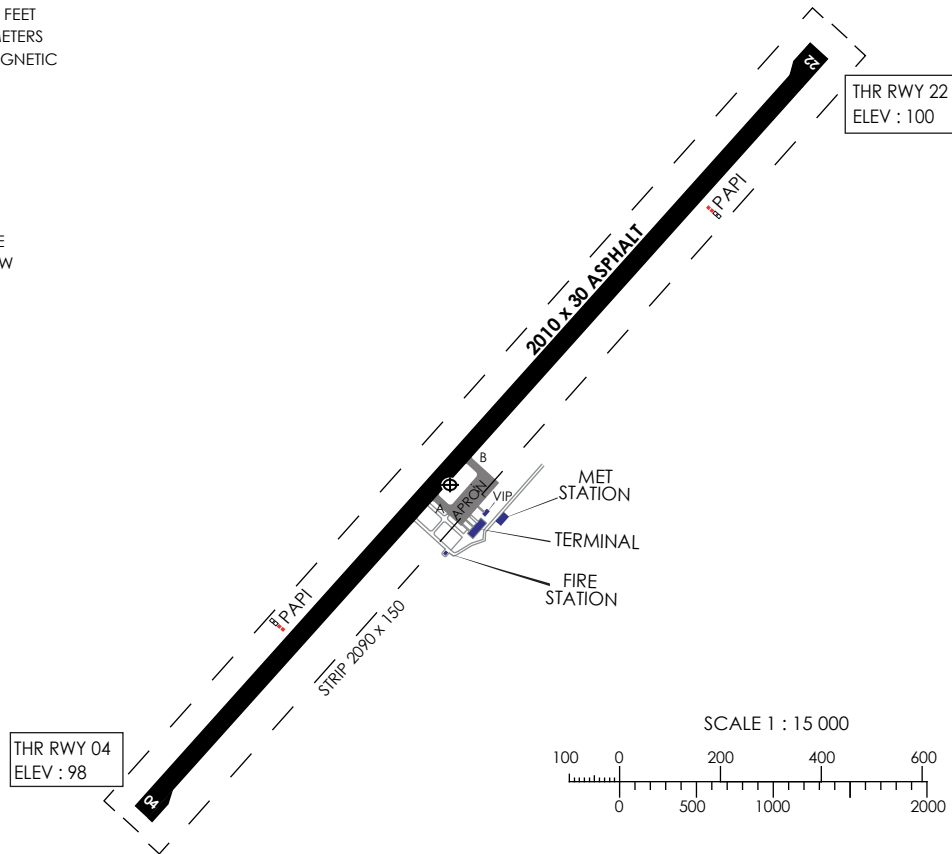
- WAWB AD 2.24-1, AERODROME CHART - ICAO, Dated 20 FEB 25; ←
- WAWB AD 2.24-11A1, INSTRUMENT APPROACH CHART - ICAO RNP RWY 04 CAT A/B/C, Dated 20 FEB 25;
- WAWB AD 2.24-11A2, CODING TABLE RNP RWY 04 CAT A/B/C, Dated 20 FEB 25;
- WAWB AD 2.24-11B1, INSTRUMENT APPROACH CHART - ICAO RNP RWY 22 CAT A/B/C, Dated 20 FEB 25;
- WAWB AD 2.24-11B2, CODING TABLE RNP RWY 22 CAT A/B/C, Dated 20 FEB 25.

WAWB AD 2.25 VISUAL SEGMENT SURFACE (VSS) PENETRATION*Reserved*

ELEVATIONS IN FEET
DIMENSIONS IN METERS
BEARINGS ARE MAGNETIC



ANNUAL RATE
OF CHANGE 5'W

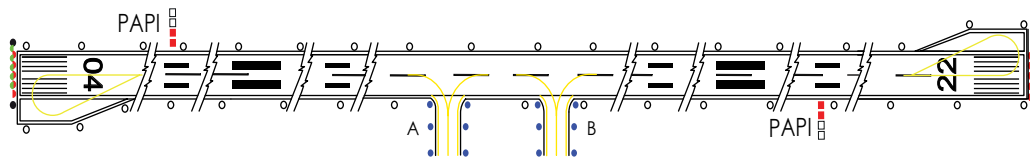


TAXIWAYS 23m WIDE

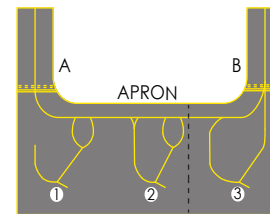
| LEGEND | |
|------------------------|------|
| AIRCRAFT STAND | ① |
| AIRCRAFT STAND MARKING | — |
| ARP | ⊕ |
| RTIL | ● |
| RWY EDGE LIGHT | ○ |
| RWY HOLDING POSITION | ▬▬▬▬ |
| THR AND RWY END LIGHT | ●●● |
| TWY EDGE LIGHT | ● |
| TWY MARKING | — |

| RWY | DIRECTION | THR |
|------------------|---|---------------------------------|
| 04 | 040° | 05°29'37.13"S 122°33'47.85"E |
| 22 | 220° | 05°28'47.52"S 122°34'30.56"E |
| BEARING STRENGTH | RWY | : PCR 380/F/C/X/T |
| | TWY A | : PCR 230/F/C/X/T |
| | TWY B | : PCR 380/F/C/X/T |
| | APRON Segment I (Aircraft Stand 3) | : PCR 380/F/C/X/T |
| | APRON Segment II (Aircraft Stand 1-2) | : PCR 300/F/C/X/T |
| RADIO | : BETOAMبارI AERODROME INFORMATION 122.6 MHz | |

MARKING, LIGHTING AIDS RWY 04/22 AND EXIT TWY



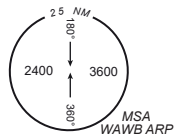
NOT TO SCALE



| COORDINATES FOR AIRCRAFT STAND | CAPACITY |
|--------------------------------|-------------------|
| 1 05°29'15.79"S 122°34'11.27"E | AT72 |
| 2 05°29'14.39"S 122°34'12.44"E | AT72 |
| 3 05°29'12.65"S 122°34'13.39"E | B737-500/A320-200 |

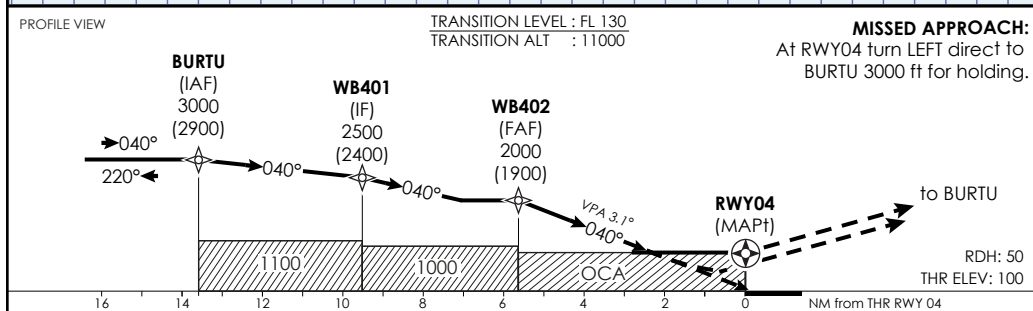
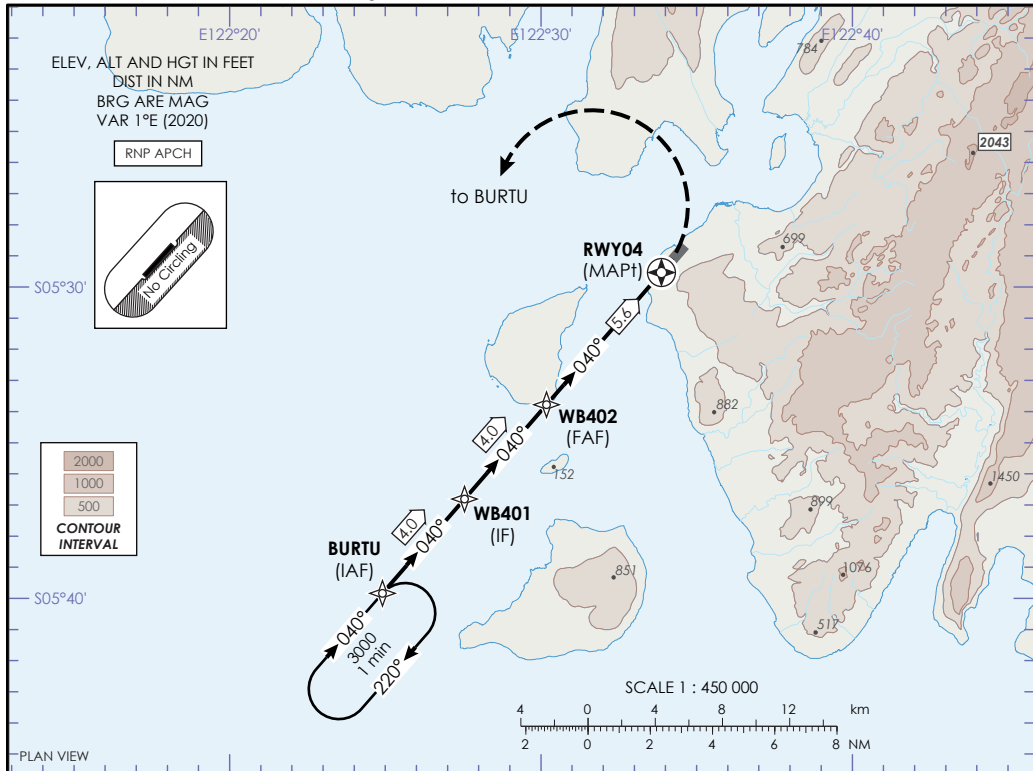
**AIP INDONESIA (VOL III)
INSTRUMENT APPROACH
CHART - ICAO**

Betoambari Aerodrome
Information : 122.6
AD ELEV : 100
Height related to AD ELEV



**WAWB AD 2.24-11A1
BAU BAU/
Betoambari
RNP RWY 04
CAT A/B/C**

Changes: AD ELEV, OCH, ALT per NM.



| | | OCA(H) | | | NM to THR RWY 04 | | | | | | |
|-------------|--------|----------|---|---|--|------|------|------|------|------|------|
| CAT of ACFT | | A | B | C | 5 | 4 | 3 | | | | |
| LNAV/VNAV | | 940(840) | | | Distance WB402 to RWY04 : 5.6 NM; MAPt at THR RWY 04 | | | | | | |
| Visibility | ALS | - | | | 70 | 80 | 90 | 100 | 120 | 140 | 160 |
| | No ALS | 5000m | | | 4:48 | 4:12 | 3:44 | 3:22 | 2:48 | 2:24 | 2:07 |
| LNAV | | 990(890) | | | Rate of Descent (ft/min) | | | | | | |
| Visibility | ALS | - | | | 384 | 439 | 494 | 548 | 658 | 768 | 878 |
| | No ALS | 5000m | | | Notes : No Circling at South East of Aerodrome. | | | | | | |
| Circling | | 990(890) | | | | | | | | | |
| Visibility | | 5000m | | | | | | | | | |

AIP INDONESIA (VOL III)
INSTRUMENT APPROACH
CHART - ICAO

AD ELEV : 100

Coding Table RNP RWY 04 CAT A/B/C

| SERIAL NR | PATH DESCRIPTOR | WPT IDENTIFIER | FLY-OVER | COURSE *M(°T) | DIST (NM) | TURN DIRECTION | ALT (ft) | SPEED LIMIT (kt) | MAG VAR 0.8°E(2020) | |
|-----------|-----------------|----------------|----------|---------------|-----------|----------------|----------|------------------|---------------------|----------|
| | | | | | | | | | VPA/TCH | NAV SPEC |
| 010 | IF | BURTU (IAF) | - | - | - | - | 3000 | - | - | RNP APCH |
| 020 | TF | WB401 (IF) | - | 040(041.1) | 4.0 | - | 2500 | - | - | RNP APCH |
| 030 | TF | WB402 (FAF) | - | 040(041.1) | 4.0 | - | 2000 | - | - | RNP APCH |
| 040 | TF | RWY04 (MAPf) | Y | 040(041.1) | 5.6 | - | 155 | - | -3.1/50 | RNP APCH |
| 050 | DF | BURTU (IAF) | - | - | - | L | 3000 | - | - | RNP APCH |

HOLDING IDENTIFICATION

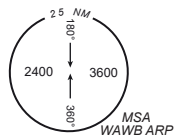
| PATH DESCRIPTOR | HOLDING FIX | INBOUND COURSE *M(°T) | TIME (MIN) | TURN DIRECTION | MINIMUM ALT (ft) | MAXIMUM ALT (ft) | SPEED LIMIT (kt) | NAV SPEC |
|-----------------|-------------|-----------------------|------------|----------------|------------------|------------------|------------------|----------|
| HM | BURTU | 040(041.1) | 1 | R | 3000 | - | - | RNP APCH |

WAYPOINT LIST

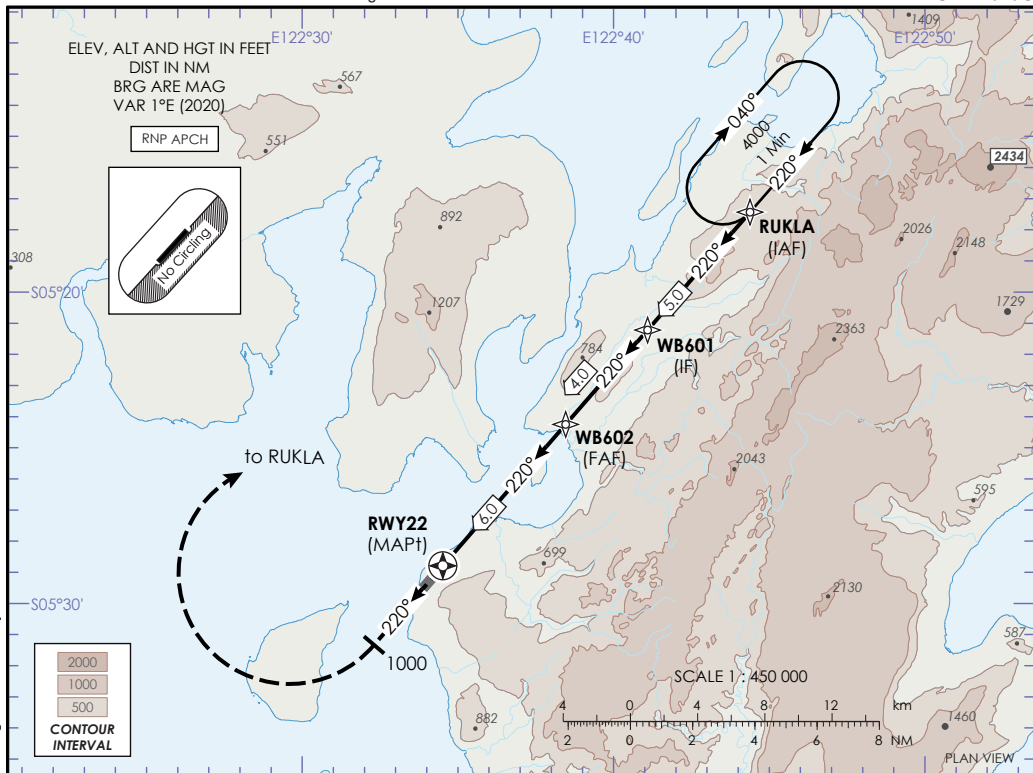
| WPT IDENTIFIER | COORDINATES |
|----------------|------------------------------|
| RWY04 | 05°29'31.89"S 122°33'52.36"E |
| BURTU | 05°39'50.4"S 122°24'54.1"E |
| WB401 | 05°36'48.6"S 122°27'32.3"E |
| WB402 | 05°33'46.7"S 122°30'10.4"E |

AIP INDONESIA (VOL III)
INSTRUMENT APPROACH
CHART - ICAO

Betoambari Aerodrome
 Information : 122.6
 AD Elev : 100
 Height related to AD ELEV



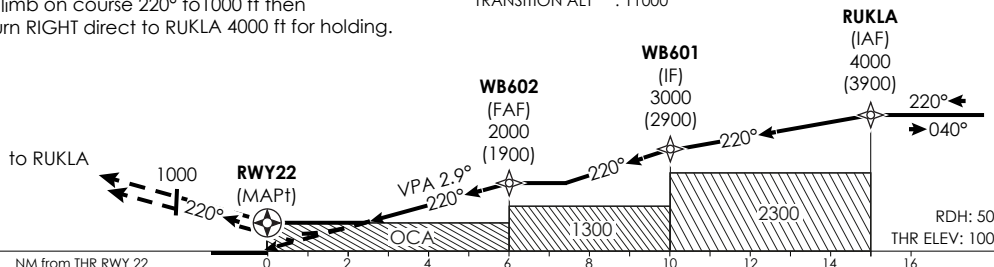
WAWB AD 2.24-11B1
 BAUBAU/
 Betoambari
 RNP RWY 22
 CAT A/B/C



MISSED APPROACH:
 Climb on course 220° to 1000 ft then
 turn RIGHT direct to RUKLA 4000 ft for holding.

TRANSITION LEVEL : FL 130
 TRANSITION ALT : 11000

PROFILE VIEW



| OCA(H) | | | NM to THR RWY 22 | | | | | | | |
|-------------|----------|-------|------------------|---|------|------|--|--|--|--|
| CAT of ACFT | A | B | C | 5 | 4 | 3 | | | | |
| LNAV/VNAV | 930(830) | | | 1689 | 1381 | 1073 | | | | |
| Visibility | ALS | - | | | | | | | | |
| | No ALS | 5000m | | | | | | | | |
| LNAV | 930(830) | | | Distance WB602 to RWY22: 6.0 NM; MAPt at THR RWY 22 | | | | | | |
| Visibility | ALS | - | | | | | | | | |
| | No ALS | 5000m | | | | | | | | |
| Circling | 990(890) | | | Ground Speed (knots) | | | | | | |
| Visibility | 5000m | | | 70 80 90 100 120 140 160 | | | | | | |
| | | | | Time (min : sec) | | | | | | |
| | | | | 5:09 4:30 4:00 3:36 3:00 2:35 2:15 | | | | | | |
| | | | | Rate of Descent (ft/min) | | | | | | |
| | | | | 359 410 462 513 616 718 821 | | | | | | |

Notes : No Circling at South East of Aerodrome.

AIP INDONESIA (VOL III)
INSTRUMENT APPROACH
CHART - ICAO

AD ELEV : 100

Coding Table RNP RWY 22 CAT A/B/C

| SERIAL NR | PATH DESCRIPTOR | WPT IDENTIFIER | FLY-OVER | COURSE °M(°T) | DIST (NM) | TURN DIRECTION | ALT (ft) | SPEED LIMIT (kt) | MAG VAR 0.8°E (2020) | |
|-----------|-----------------|----------------|----------|---------------|-----------|----------------|----------|------------------|----------------------|----------|
| | | | | | | | | | VPA/TCH | NAV SPEC |
| 010 | IF | RUKLA (IAF) | - | - | - | - | 4000 | - | - | RNP APCH |
| 020 | TF | WB601 (IF) | - | 220(221.1) | 5.0 | - | 3000 | - | - | RNP APCH |
| 030 | TF | WB602 (FAF) | - | 220(221.0) | 4.0 | - | 2000 | - | - | RNP APCH |
| 040 | TF | RWY22 (MAPt) | Y | 220(221.1) | 6.0 | - | 155 | - | -2.9/50 | RNP APCH |
| 050 | CA | - | - | 220(221.1) | - | - | 1000 | - | - | RNP APCH |
| 060 | DF | RUKLA (IAF) | - | - | - | R | 4000 | - | - | RNP APCH |

HOLDING IDENTIFICATION

| PATH DESCRIPTOR | HOLDING FIX | INBOUND COURSE °M(°T) | TIME (MIN) | TURN DIRECTION | MINIMUM ALT (ft) | MAXIMUM ALT (ft) | SPEED LIMIT (kt) | NAV SPEC |
|-----------------|-------------|-----------------------|------------|----------------|------------------|------------------|------------------|----------|
| HM | RUKLA | 220(221.1) | 1 | R | 4000 | - | - | RNP APCH |

WAYPOINT LIST

| WPT IDENTIFIER | COORDINATES |
|----------------|------------------------------|
| RWY22 | 05°28'47.52"S 122°34'30.56"E |
| RUKLA | 05°17'25.8"S 122°44'22.9"E |
| WB601 | 05°21'13.1"S 122°41'05.4"E |
| WB602 | 05°24'15.0"S 122°38'27.4"E |